



# ELECTRIC DRUM/BARREL PUMP

MODEL NO: TP6818.V2

Thank you for purchasing a Sealey product. Manufactured to a high standard, this product will, if used according to these instructions, and properly maintained, give you years of trouble free performance.

**IMPORTANT:** PLEASE READ THESE INSTRUCTIONS CAREFULLY. NOTE THE SAFE OPERATIONAL REQUIREMENTS, WARNINGS & CAUTIONS. USE THE PRODUCT CORRECTLY AND WITH CARE FOR THE PURPOSE FOR WHICH IT IS INTENDED. FAILURE TO DO SO MAY CAUSE DAMAGE AND/OR PERSONAL INJURY AND WILL INVALIDATE THE WARRANTY. KEEP THESE INSTRUCTIONS SAFE FOR FUTURE USE.



Refer to instructions



Wear eye protection



Wear protective gloves



Wear safety footwear



Wear protective clothing

## 1. SAFETY

### 1.1. ELECTRICAL SAFETY

- WARNING!** It is the user's responsibility to check the following:
- ✓ Check all electrical equipment and appliances to ensure that they are safe before using. Inspect power supply leads, plugs and all electrical connections for wear and damage. Sealey recommend that an RCD (Residual Current Device) is used with all electrical products.
- Electrical safety information.** It is important that the following information is read and understood:
- ✓ Ensure that the insulation on all cables and on the appliance is safe before connecting it to the power supply.
- ✓ Regularly inspect power supply cables and plugs for wear or damage and check all connections to ensure that they are secure.
- Important:** Ensure that the voltage rating on the appliance suits the power supply to be used and that the plug is fitted with the correct fuse.
- ✗ **DO NOT** pull or carry the appliance by the power cable.
- ✗ **DO NOT** pull the plug from the socket by the cable.
- ✗ **DO NOT** use worn or damaged cables, plugs or connectors. Ensure that any faulty item is repaired or is replaced immediately by a qualified electrician.

If the cable or plug is damaged during use, switch off the electricity supply and remove from use.

**Ensure that repairs are carried out by a qualified electrician.**

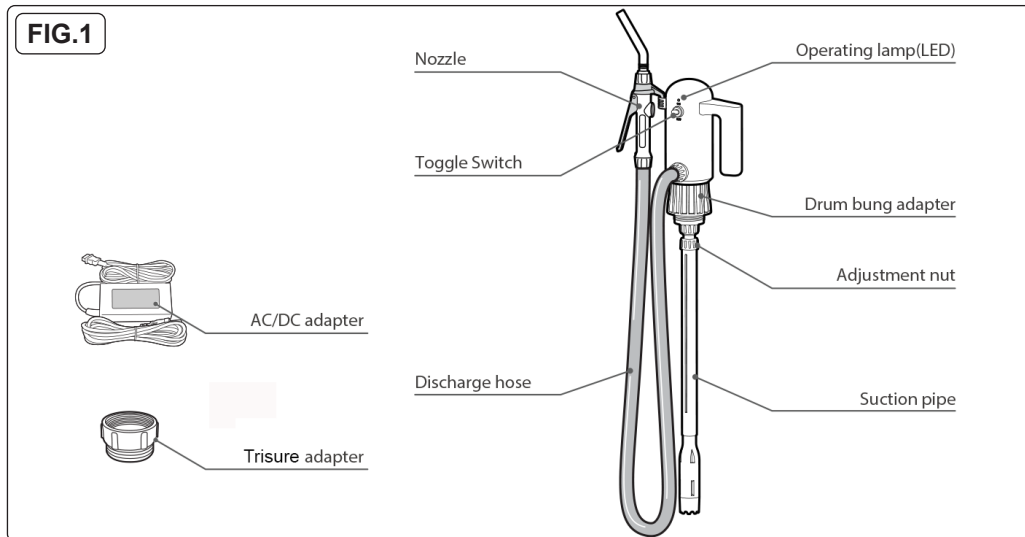
### 1.2. GENERAL SAFETY

- WARNING!** Ensure Health & Safety, government and local authority regulations relating to the transfer of diesel are adhered to when using this equipment. Familiarise yourself with the application, limitations and specific hazards peculiar to the pump.
- WARNING!** Disconnect pump from the mains power before changing accessories, servicing or performing any maintenance.
- ✓ Maintain pump in good condition (use authorised service agent). Drain before dismantling.
- ✓ Maintain correct balance and footing. Ensure the floor is not slippery and wear non-slip shoes.
- ✓ Ensure the transfer area is free of clutter and has adequate lighting.
- ✓ Keep children and unauthorised persons away from the working area.
- ✓ Replace/repair damaged parts. Use genuine parts. Unauthorised parts are dangerous and will invalidate warranty.
- ✗ **DO NOT** use the pump without the delivery nozzle attached.
- ✗ **DO NOT** start or stop the pump by switching on or off at the mains power supply.
- ✗ **DO NOT** operate the unit with wet hands. We recommend the use of gloves and goggles.
- ✓ It is installer's responsibility to ensure all supply pipes, fixtures and fittings are adequate for the safe flow of diesel fuel.
- ✗ **DO NOT** use this pump for transferring the following liquids; Acetone, Benzene, Cresol, Ethyl, Phenol, Methyl ethyl, Concentrated caustic soda liquid, Nitric acid, Hydrochloric acid, Sulphuric-acid, thinner or solvents, Etc.
- ✗ **DO NOT** use for concentrated acids.
- ✓ Only use on applicable liquids written on the specifications. Make sure to use the pump on even surface.
- ✗ **DO NOT** use when the cable and plug is damaged or if plug is loose on outlet.
- ✓ Keep the power supply adapter out of direct sunlight, water vapour, soft coal, dust, and damp air etc.
- ✗ **DO NOT** touch and operate any plug or power supply units with wet hands.
- ✓ Make sure the pump is tightly secured to the drum (tank) before turning the pump on.
- ✗ **DO NOT** refuel directly while the vehicle or equipment is turned on.
- ✗ **DO NOT** leave the pump unattended.
- ✗ **DO NOT** allow children to operate the product without adult supervision. Wash and clean out the outlet, plug, and plug blades regularly.
- ✓ If the power supply adapter falls into the water, pull the plug out and **DO NOT** reuse it.
- ✓ Make sure to hold on the plug and pull it out from the outlet. (**DO NOT** pull on the cable).
- ✗ **DO NOT** get power cable damaged, bent, pulled, twisted, or bound.
- ✗ **DO NOT** get the plug and outlet wet.
- ✓ When you hand it over to another person, be sure to give them the instructions too.
- ✗ **DO NOT** use deteriorated or contaminated liquids and fuels.
- ✗ **DO NOT** use this pump for hot liquids above 40°C (104°F).
- ✓ Use it in a well-ventilated area since the power supply adaptor becomes a little hot.
- ✗ **DO NOT** run the pump 'dry' or let the pump idle without transferring.
- ✗ **DO NOT** run the pump for longer than 15 minutes.
- ✓ Make sure to turn on the power after using the pump.
- ✓ Make sure to remove any left-over liquid in the discharge hose after each use.

- ✓ After using the pump, **DO NOT** keep it on its side or upside down.
- ✗ **DO NOT** alter or disassemble the pump.
- ✗ **DO NOT** shock the pump and power supply adapter. Also **DO NOT** strain the power cable.
- ✓ When cleaning up the pump, **DO NOT** use thinner, benzene, organic solvent, or glass cleaners.

## 2. INTRODUCTION

Electric drum mounted pump designed for pumping diesel, AdBlue®, antifreeze, detergents, water and light oils up to a viscosity of 100cst. Fitted with built-in fuse for protection, with a silenced motor keeping noise to a minimum. Telescopic suction tube features a stainless steel filter at the base of the tube, preventing foreign matter from entering the motor. Pump housing features a convenient holder for storing the dispensing nozzle. Includes 230V mains adaptor and 12V battery clips allowing user to operate unit with whichever supply is available. Supplied with a 2" BSP adaptor, 2m hose and manual dispensing nozzle with spout.



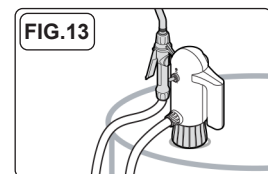
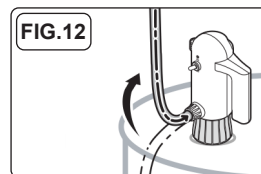
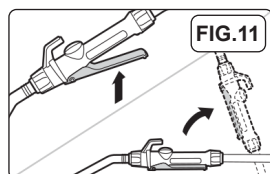
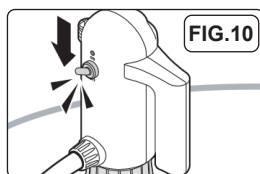
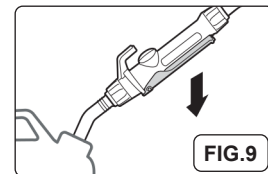
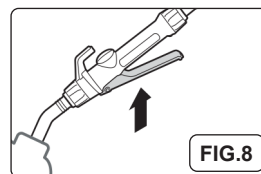
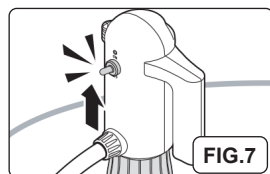
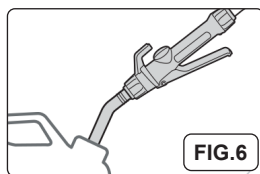
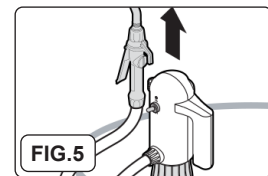
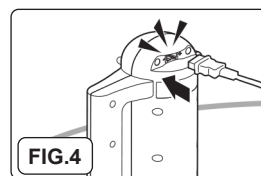
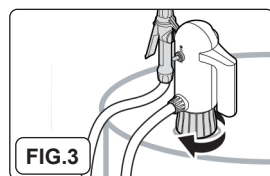
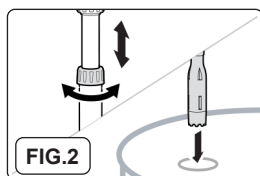
## 3. SPECIFICATION

Model No:..... TP6818.V2  
 Current:.....3A  
 Duty Cycle:..... 15min on, 30min off

Flow Rate:..... 16L/min  
 Fuse Rating:.....5A  
 Power:..... 16.8W

## 4. OPERATION

- 4.1. Adjust the length of the suction pipe to fit the drum, (fig.2).
- 4.2. Insert the suction pipe into the drum (fig.2).
- 4.3. Tighten the drum bung adapter (fig.3).
- 4.4. Connect power supply to the pump (fig.4).
- 4.5. Pull out the nozzle from the nozzle holder (fig.5).
- 4.6. Place the nozzle into the receiving container (fig.6).
- 4.7. Switch on the pump by moving the switch up (fig.7).
- 4.8. Pull the nozzle lever and start supplying the liquid (fig.8).
- 4.9. Release the lever when the liquid supply is complete (fig.9).
- 4.10. Switch off the pump by moving the switch down (fig.10).
- 4.11. Lift the nozzle up and pull the lever (fig.11).
- 4.12. Drain the liquid in the hose back into the drum (fig.12).
- 4.13. Insert nozzle into the nozzle holder for storage (fig.13).



## 5. MAINTENANCE

- 5.1. Switch off and remove power supply before any maintenance.
- 5.2. Clean the pump and inspect all piping connections for leaks.
- 5.3. Clean the filter (refer to parts list) by removing end cap remove filter and clean.
- 5.4. Store in a dry, childproof location.



### ENVIRONMENT PROTECTION

Recycle unwanted materials instead of disposing of them as waste. All tools, accessories and packaging should be sorted, taken to a recycling centre and disposed of in a manner which is compatible with the environment. When the product becomes completely unserviceable and requires disposal, drain any fluids (if applicable) into approved containers and dispose of the product and fluids according to local regulations.



REGISTER YOUR  
PURCHASE HERE



### WEEE REGULATIONS

Dispose of this product at the end of its working life in compliance with the EU Directive on Waste Electrical and Electronic Equipment (WEEE). When the product is no longer required, it must be disposed of in an environmentally protective way. Contact your local solid waste authority for recycling information.

**Note:** It is our policy to continually improve products and as such we reserve the right to alter data, specifications and component parts without prior notice. Please note that other versions of this product are available. If you require documentation for alternative versions, please email or call our technical team on [technical@sealey.co.uk](mailto:technical@sealey.co.uk) or 01284 757505.

**Important:** No Liability is accepted for incorrect use of this product.

**Warranty:** Guarantee is 12 months from purchase date, proof of which is required for any claim.

Sealey Group, Kempson Way, Suffolk Business Park, Bury St Edmunds, Suffolk. IP32 7AR



01284 757500



[sales@sealey.co.uk](mailto:sales@sealey.co.uk)



[www.sealey.co.uk](http://www.sealey.co.uk)